



**Kim Charlie, Fisheries Manager for Sts'ailes and
Scowlitz (Harrison Fisheries Authority)**

The Harrison Salmon Producers Association



Our Business Goal:

... to operate a joint-community commercial fishing enterprise that works with our fishing fleet and communal salmon production to generate profits and employment benefits for the fishers and our community fisheries



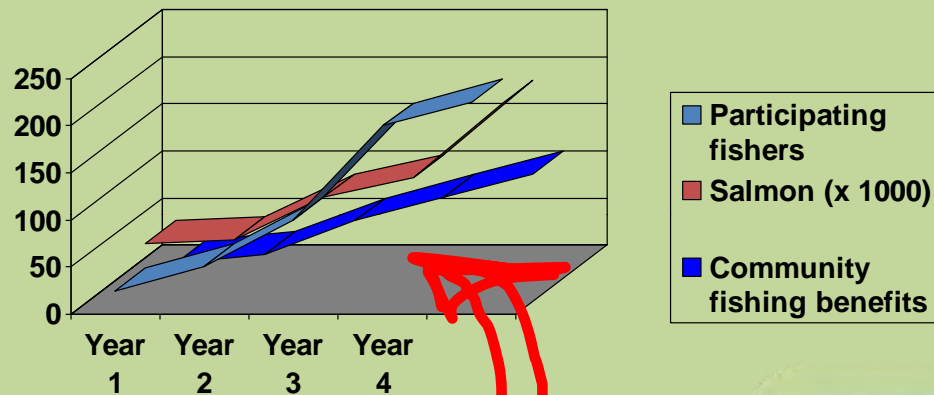
Success is based upon a contract between fishermen and communities to work together

collective marketing

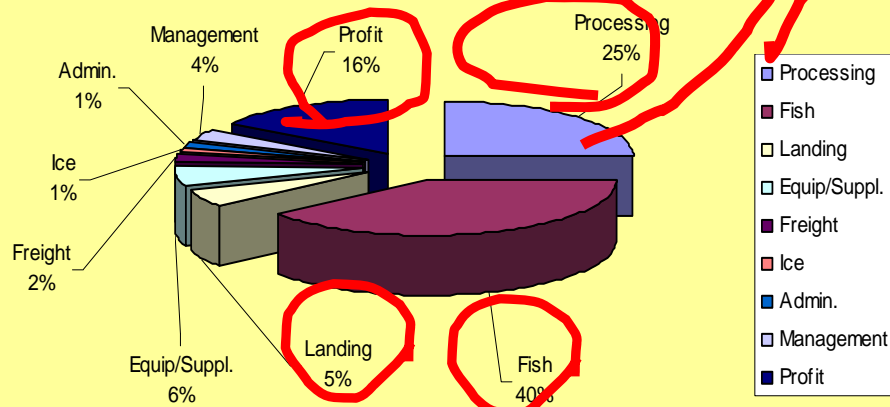
+ more processing and value

= More fishermen and more benefits

Harrison River Coop Benefit Model



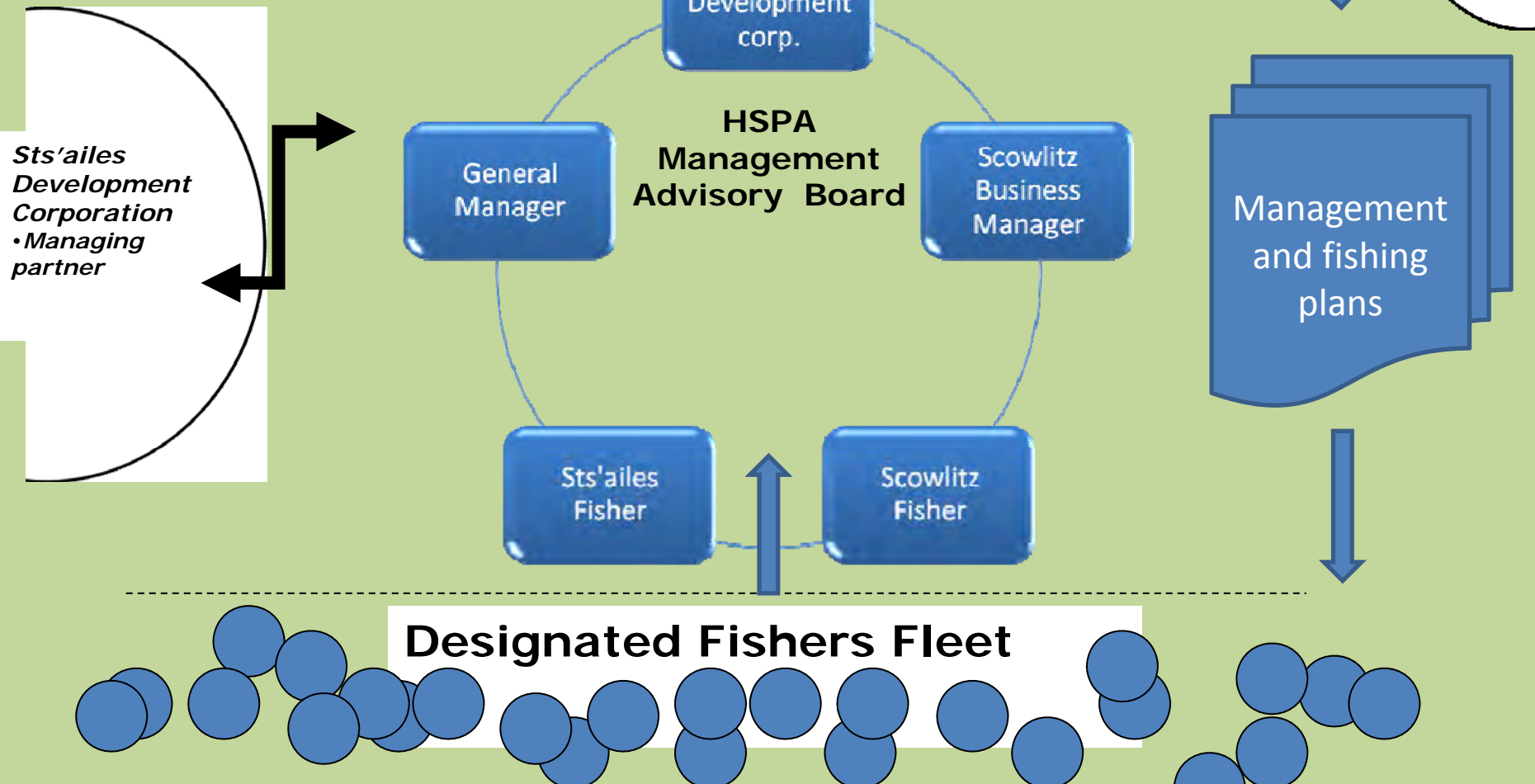
2006 Harrison Rivre Chum Demonstration Fishery Revenue/Expense profile



The Harrison Salmon producers Association is entrusted with the job of making profits with the fish harvest for the fishers and the Communities.

A Limited Liability Partnership

HFA
• Fisheries
Authority



Harrison Fishers Forum



Fisheries Stewardship

- Harrison Chum population survey
- Salmon stream escapement monitoring
- Sockeye test fishery
- Tagging and clipping contracts
- Weaver Creek spawning channel
- Habitat enhancement

FLEET STATISTICS:

Registered commercial fishers: 200

Active fishing vessels (14-18 feet): 70+

Beach seine nets: 9

Gill nets (drift): 129

Gill nets (set): 37+

Traps (ESSR): 2 (*Chehalis River & Weaver Creek*)

Buying Station Equipped: 1 (rented seasonally)

Landing sites: 3 (*Harrison and the Fraser Rivers*)

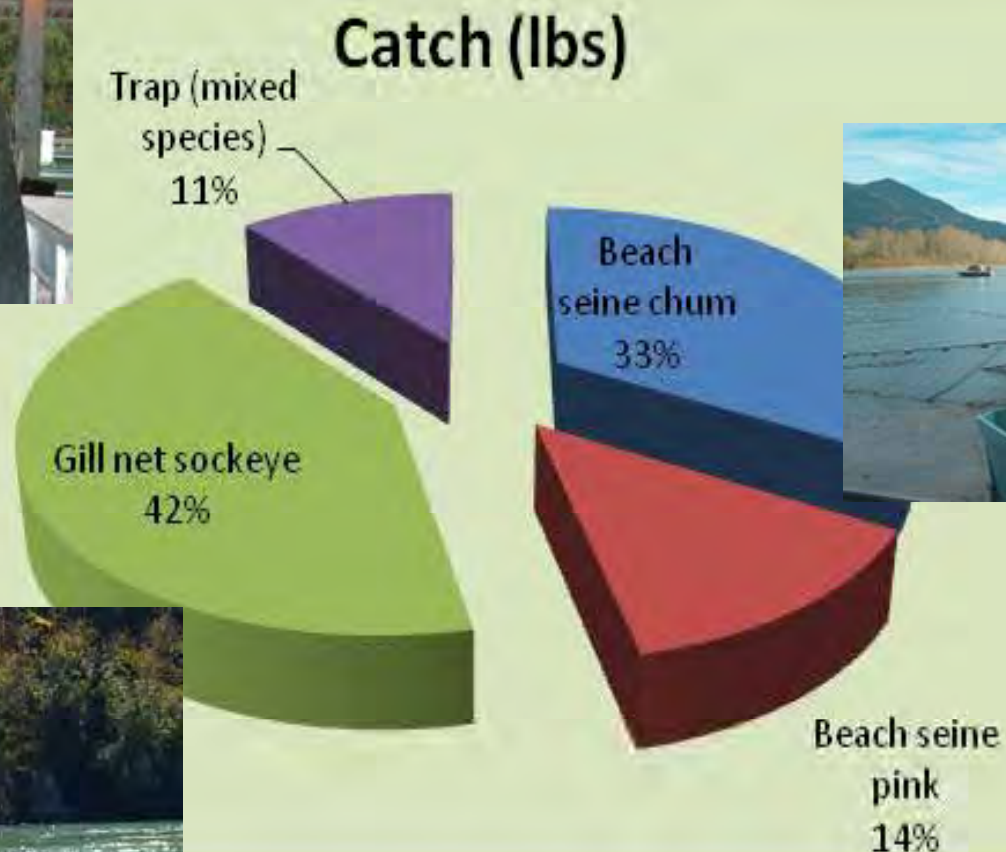
Machine Operators: 3

Monitors: 12

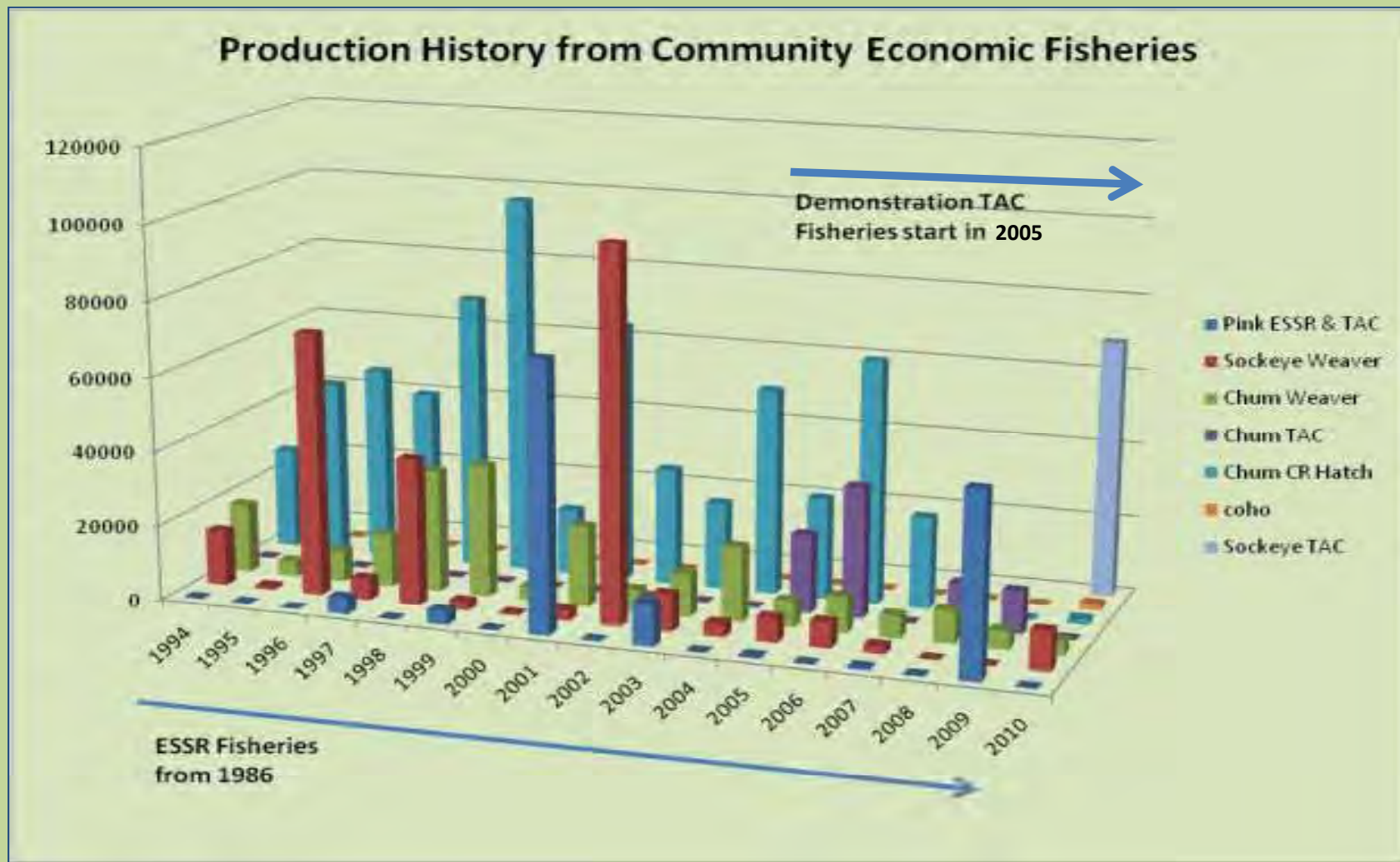
Fishers Experience Profile



Profile of the *HFA* fisheries



Fish Harvesting History and Future



2011 EO Fisheries

EO Fisheries

- 47,591 sockeye (290,300 lbs)
- 81,692 pink (326,768 lbs)

ESSR Fisheries (pending)

- Weaver sockeye, pink and chum
- Chehalis chum, chinook and coho



Local retail marketing trials with watershed partners

Bar-coded tail tag



River branding commercial salmon to harness markets



A First Nations-led inland salmon producers collaboration



River-branding inland salmon fisheries



Working Goal (QVS)

*To promote inland salmon fisheries, the river fishing cultures,
and the high quality natural and wholesome seafood
that is produced,
as certifiably sustainable, healthy, and good value.*

Traceability platform development, training field trials in 2006-2011



LIST OF FORMS (RIVER TO PLATE)


* **Bold indicates forms needed to follow the fish**

1. **Communal Fishing License**
2. **Designation (card or list)**
3. Commercial Fishery monitoring report
4. **Tote Tags**
5. **Landing Slip**
6. **Fish Slip**
7. Biological Sampling Data
8. Quality Sampling Data
9. **Landing Quality Assessment**
10. Landing Manifest
11. **Buying Station License**
12. Broker/vending license⁸
13. Federal HACCP
14. BC Processing Plant License
15. **Bill of Lading**
16. **DFO Transport Authorization**
17. **Shipping Summary**
18. Transportation Manifest
19. **Fish plant receiving report**
20. **Fish plant processing reports**
21. **Consumer labeling**



Forms, Forms, Forms...

Home of the “Super Fish Slip” – data menu, archived forms, enhanced reporting tools



Quality
Sustainability
Traceability

**Fish Slip
6727**

6727 > 2010/10/08 > 08:35 > Weaver Creek

Fish Slip: 6727

Landing Date: 2010/10/08 08:35

Landing Location: Weaver Creek

Fishing Location: Harrison River

Gear Type: Rack

Band: Chehalis

Totes:


Tote #	Species	Pieces	Weight	Value	Quality?
001	Chum	77	1000	0	Y
002	Chum	83	1100	0	Y
003	Chum	80	1175	0	Y
004	Sockeye	170	1050	0	Y
005	Chum	90	1116	0	Y
006	Chum	79	975	0	Y
007	Sockeye	200	1040	0	Y
008	Chum	80	1200	0	Y

Monitor Signature _____

Landing Signature _____

2010/10/08 08:35

Page 1



Quality
Sustainability
Traceability

**Shipping
Manifest**

2010/10/08 > 11:00 > 0187

Departure Date: 2010/10/08 11:00

Landed At: Weaver Creek

Trucking Company: Keep It Cool

Trucking BL#: 0187

Driver Name: Lorne

Shipped By: null

Destination: Sea Agra, Richmond

Landing Totes: 8

Tote #	Date	Pieces	Species	Weight
008	2010/10/08 08:35	80	Chum	1200
007	2010/10/08 08:35	200	Sockeye	1040
006	2010/10/08 08:35	79	Chum	975
005	2010/10/08 08:35	90	Chum	1116
004	2010/10/08 08:35	170	Sockeye	1050
003	2010/10/08 08:35	80	Chum	1175
002	2010/10/08 08:35	83	Chum	1100
001	2010/10/08 08:35	77	Chum	1000

Total Weight: 8656 lbs

Monitor Signature _____

Shipping Signature _____

2010/10/08 11:00

Page 1

A First Nations In-river Certification Program traces fish to 3 data pillars...

QMP - Validated by
Food science Officer



Values framework

- validated by local First Nation



Selective fishing plan

- validated by co-managers



Authentic

ing with consumers



Anatomy of a Tail Tag – industry and consumer validation

Field contains traceability logo (top) and logos of the First Nations bands using this particular tail tag (bottom).

Field contains the same message that is encoded in the QR Code on the front of the tag, less the catch date. Also reminds the consumer that they may verify the message and catch date by scanning the QR Code.



Scanning this QR Code generates a text message that reads:

*"This code denotes wild Sockeye salmon (*Oncorhynchus nerka*) caught on 2010 August 30 at Harrison Mills, British Columbia, Canada by members of the Chehalis and Scowlitz First Nations."*

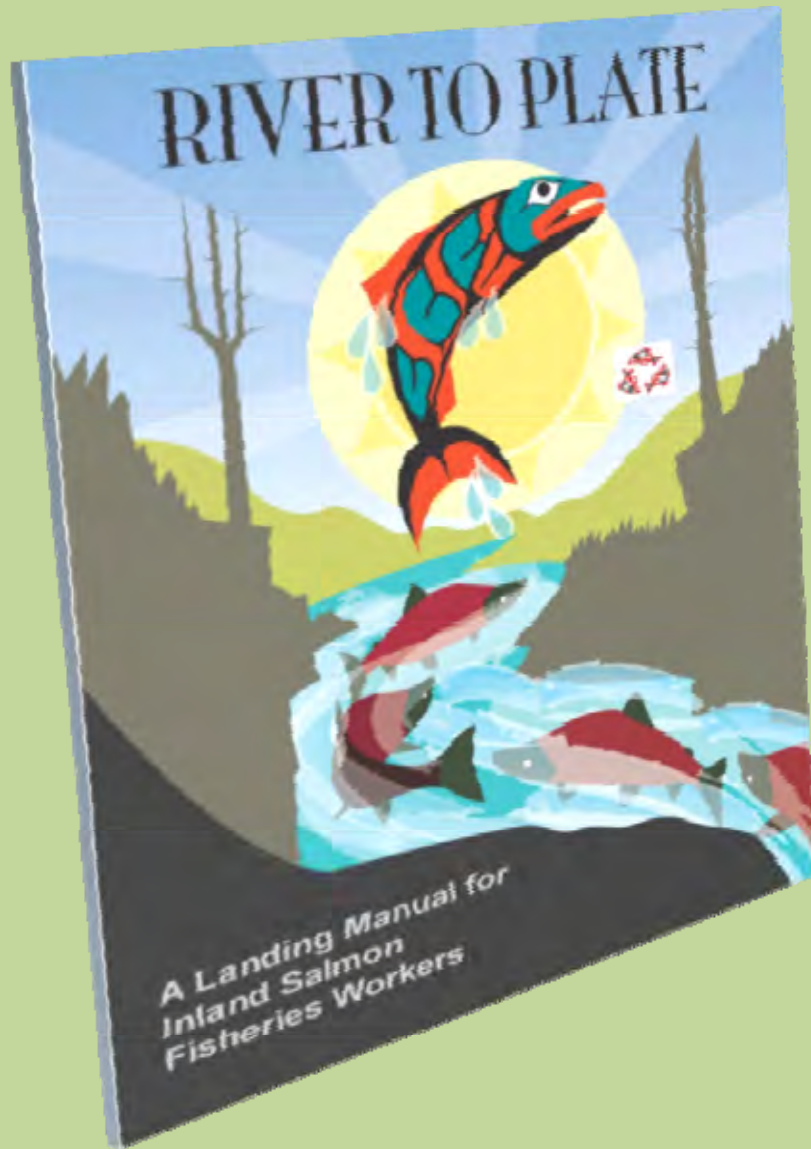
A unique bar code is generated for each fishing day, for each species, location and fishing community.

Scanning this QR Code connects the user to a 34-second branded, traceability video at:

www.youtube.com/watch?v=mmctzgnqddg

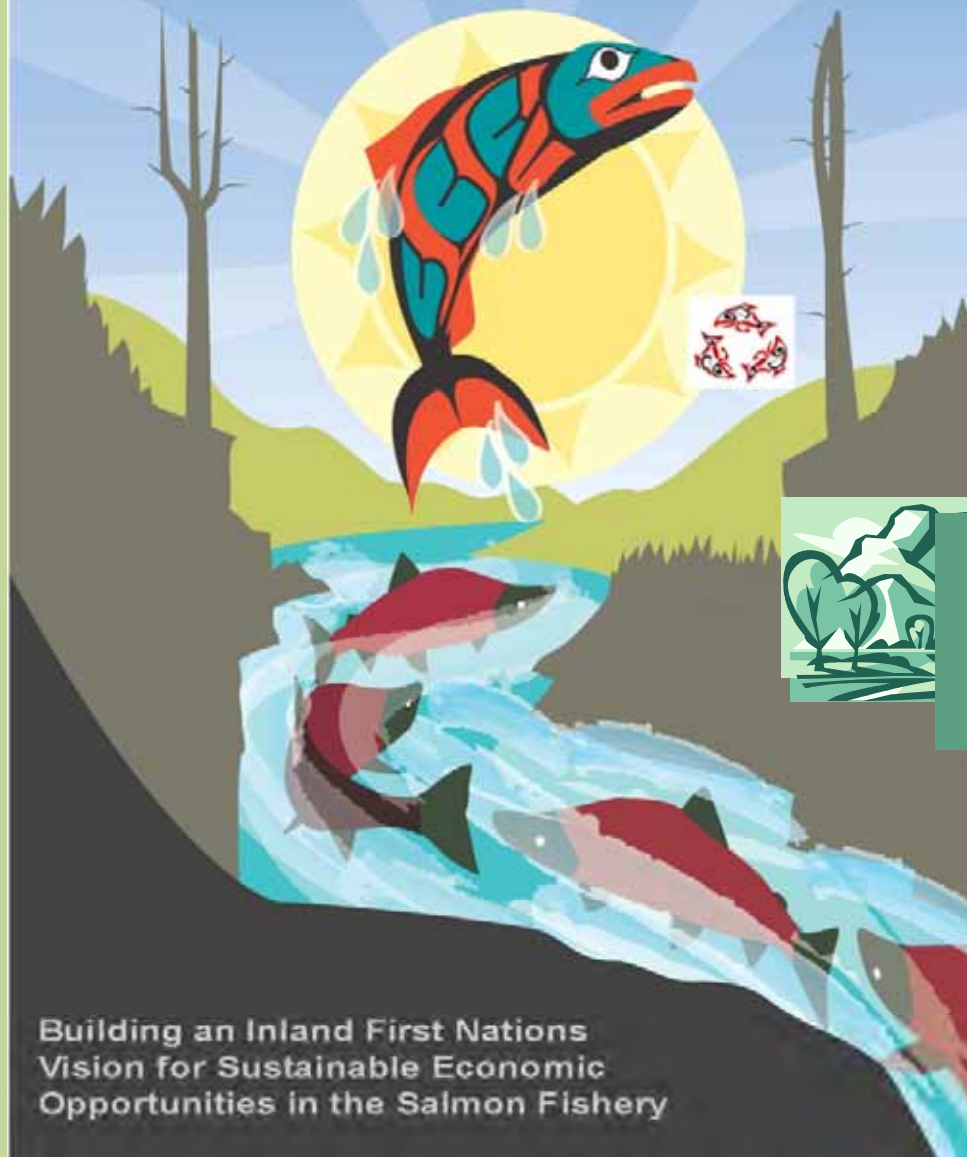
The video can only be accessed through the bar code, or by navigating directly to this URL.

...Collaborative landing site handbook (*in progress*)



- Common methods and standards for producer control
- Focus on fisheries and landing site workers
- Supports traceability, quality management, and certification
- Achieves regulatory requirements to access market place

RIVER TO PLATE



A First Nations Vision for Inland Salmon EO Fisheries

Sustainability
Quality
Value

2005 - 2012